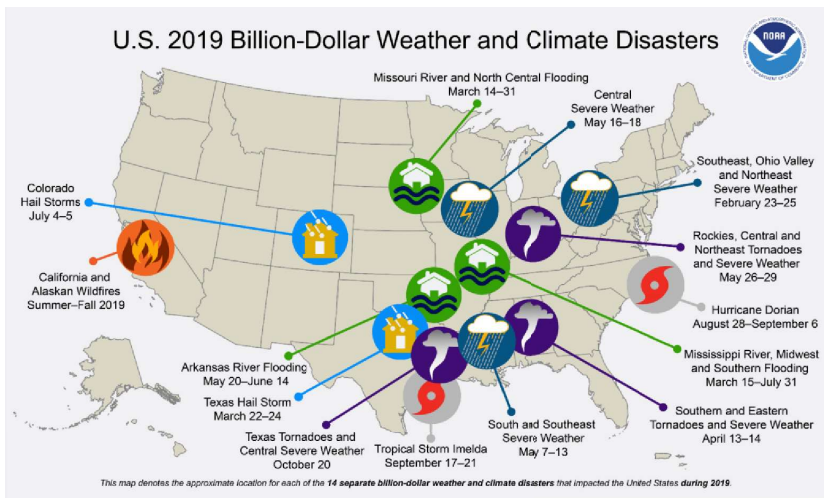


Reliability & Resiliency Impact



Source: NOAA

- New reality for millions of workers and students around the world
 - Health care systems operating at full or near full capacity, has made electric infrastructure even more critical
 - Reliable and resilient electric service is more important than ever
- Major weather events could also occur at this time
 - Hurricane season starts in June 1
 - Peak wildfire season in the U.S. is in the Summer (varies by state)
- Increased need for cyber-security
 - Phishing and malware distribution using the subject of coronavirus or COVID-19 as a lure
 - Registration of new domain names containing wording related to coronavirus or COVID-19
 - Attacks against newly—and often rapidly—deployed remote access and teleworking infrastructure